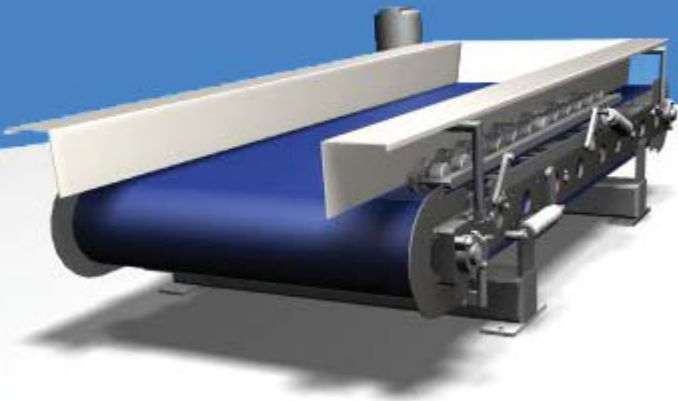


WEIGH FEEDER

- FULLY AUTOMATIC CALIBRATION AVAILABLE
- AVAILABLE IN STANDARD, SANITARY AND SEVERE DUTY
- 63" PULLEY CENTERS STANDARD CUSTOM LENGTHS ARE AVAILABLE
- BELT WIDTHS FROM 6" THROUGH 36"

WF1



The WF1 is our classic "through the belt" weigh belt feeder with outstanding features including **fully automatic** calibrations and advanced performance reporting which provide detailed calibration results.

The weigh feeder utilizes a pivoting weigh deck supported by a unique ball and socket arrangement which reduces the lateral force on the weight sensor. The weigh deck construction allows the force to be transmitted to the weight sensor without rigid mounting thereby reducing errors caused by thermal expansion and contraction. Add the pneumatic belt tensioning system and the WF1 is an outstanding choice in through the belt weigh systems.

Standard Belt Widths are 6, 12", 18", 24", 30" and 36".
Custom lengths and widths are available.

May be equipped with 56-C Face motor or gearmotor.

Thermoplastic or rubber belting



Industrial Process Automation, Inc.
5650 Pirrone Road
Salida, Ca 95368
E-mail: Sales@ipacontrol.com

Phone: (866) 730-7730
Fax: (866) 419-4076

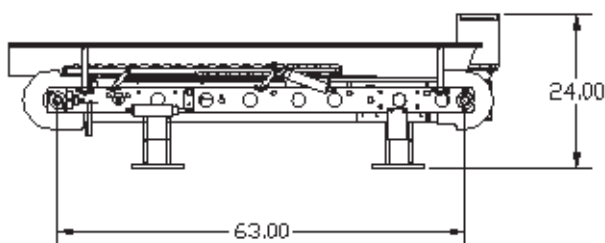
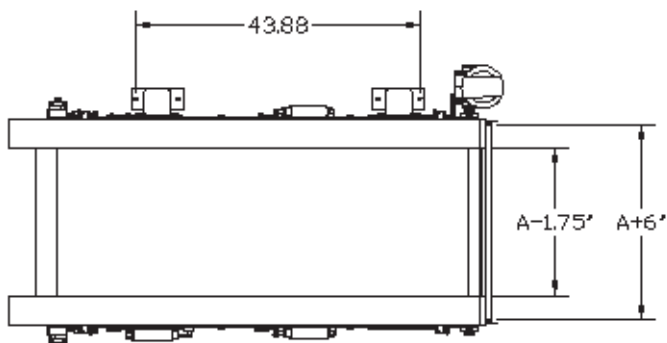
Web: www.ipacontrol.com

WEF1

WEIGH FEEDER
-FULLY AUTOMATIC CALIBRATION
-AVAILABLE IN STANDARD, SANITARY AND SEVERE DUTY
-63" PULLEY CENTERS STANDARD CUSTOM LENGTHS ARE AVAILABLE
-BELT WIDTHS FROM 12" THROUGH 36"

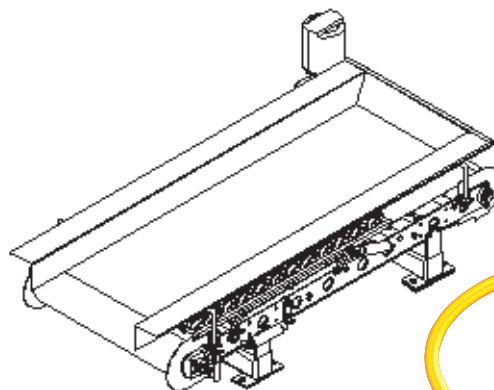
Specifications:

- ... Bellows Style Hermetically sealed load cell rated to IP67.
- ... Sanitary Duty Model: All materials of construction are synthetic or 300 series stainless steel. All purchased items are stainless steel where available.
- ... Standard and Heavy duty models: Machine is constructed of Plated mild steel, Stainless Steel and synthetic.
- ... Belting uses positive tracking through the use of a 'V' guide on the inside of the belt. Thermoplastic belting available as an option.
- ... Cantilever design allows for easy belt replacement.
- ... Ideal for inline, bin, silo and angle feeding applications. Flanged inlets to mate to silo discharge are available.
- ... Multi-voltage motor rated 230/460 VAC
- ... Available with microprocessor based control package or optional Allen Bradley based control package.



Available Belt widths (A) =
6", 12", 18", 24", 30" and 36"

Custom lengths and sizes are available.



Industrial Process Automation, Inc.
5650 Pirrone Road
Salida, Ca 95368
E-mail: Sales@ipacontrol.com

Phone: (866) 730-7730
Fax: (866) 419-4076

Web: www.ipacontrol.com